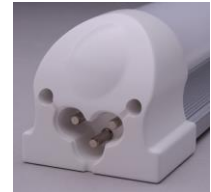
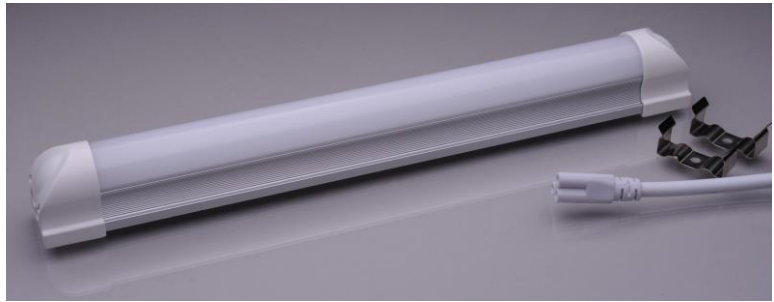


Indoor LED Lamp: TL85-series

- 85lm/W High efficiency LED Lamp
- 12V DC LED driver
- Over temperature protection dimming
- LED life time 50,000 h
- Anodized AL tube with integrated reflector



TL series lamps are high lumen output, long life, reliable tube LED lamps for indoor lighting applications. Due to their advanced and unique over temperature protection, TL85 series lamps can withstand extreme conditions. Using high frequency switching LED driver technology with no electrolytic capacitors, Zimpertec lamps provide excellent performance in light efficiency, lifetime and reliability.

Technical Data Lamp	TL85-xx
Type	03
Power (+/- 0.5W)	3W
Current @ 12.5V	0.24A
Voltage	11...20V DC
Luminous efficiency	85lm/W
CRI	>80%
Working Temperature	-20...+50°C
Color Temperature	6400K +/-10%
LED lifetime	50,000h
IP Rating	IP30
Humidity	<95% non-condensing
Socket	Terminal with +/- wire connection
Length/Diameter	300mm/25mm
All performance values valid at 12.5VDC and 25°C ambient temperature	

Datasheet: DATASHEET-TL85-SERIES-2013-08-08 Subject to change without notice